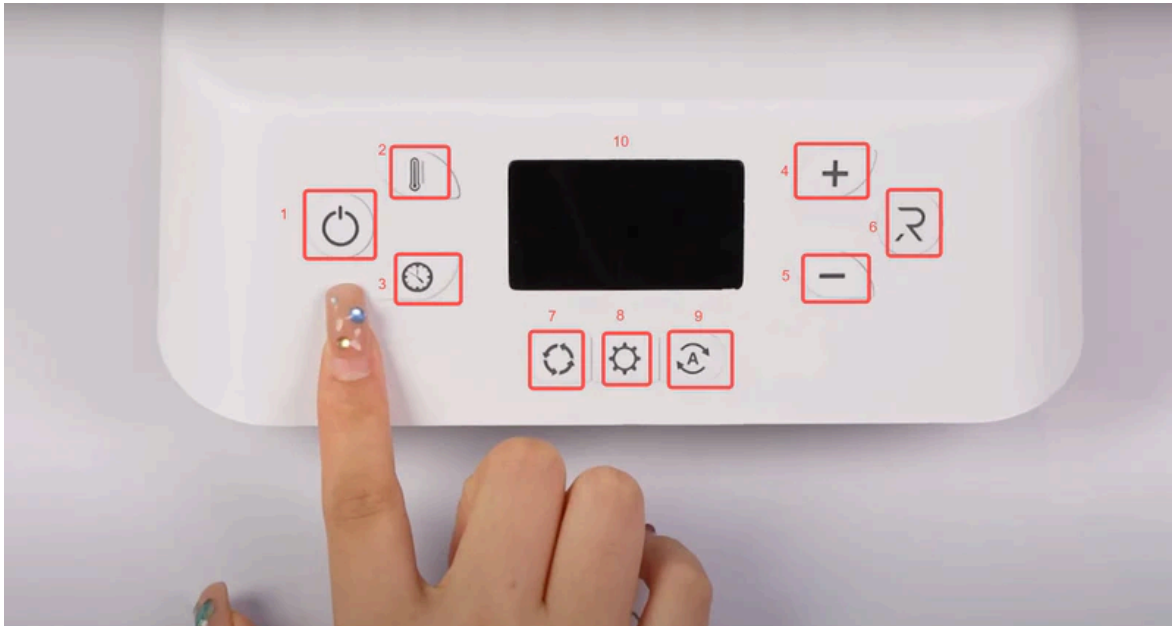


# Automatic Heat Press Guide

## Understanding the Control Panel



- ① **Power key:** Turns the machine on and off.
- ② **Temp key:** Sets the temperature and allows you to switch between Celsius and Fahrenheit.
- ③ **Time key:** Sets the pressing time.
- ④ **"+" key:** Increase the temperature or time value.
- ⑤ **"-" key:** Decrease the temperature or time value.
- ⑥ **"R" key:** Starts the pressing process.
- ⑦ **"Mode" key:** Selects pre-set settings for common materials: Heat Transfer Vinyl (1), Glitter HTV (2), Transfer Paper (3), Sublimation Paper (4).
- ⑧ **"Custom" key:** Allows users to create and save two personalized temperature and time settings.
- ⑨ **"Auto" key:** automatically iron on a batch of similar products based on the user-defined memory modes.
- ⑩ **Display screen:** Show temperature, time, mode level, and "Auto" mode indicator.

### WARNINGS:

HTVRONT automatic heat press machine **does not support pressure adjustment.**

# 4 STEPS TO PREPARE YOUR DESIGN FOR TRANSFER

## Understanding the Importance of Preparation

Before transferring your design to a garment, it is crucial to prepare it properly. This involves choosing the right materials and ensuring that your design is ready for transfer.



## Selecting the Right HTV Material

Choosing the correct HTV material is essential for a successful transfer process. Make sure to select an HTV material that is suitable for your specific project.



## Cutting Your Design with Precision

Use a cutting machine like Cricut or Silhouette to accurately cut your design from the HTV material. Precision is key to ensuring that your design transfers smoothly.



## Weeding Out Excess HTV Material

After cutting your design, carefully remove the excess HTV material from it. This step is important to ensure that only the desired parts of your design are transferred.



# Transferring Your Design

Now that your design is ready, you can transfer it to your garment. Here's how:

**1. Prepping the garment.** Make sure the garment is clean and ironed.



**2. Press the switch key to start heating.** The start key will feature a long green light. And beeps when reaching the set temperature.

**3. Preparing press mat.** Pull out the heat plate, and we can see the heart press mat.



There are rubber bands for fixing it.



**4. Placing the design.** Position your design on the garment where you want it to be.



**5. Place the cloth and material on Heat tray.**  
Position material under the heating element.





**6. Closing and locking the heat press.**  
Push Tray in until you feel it click into place.

**7. Starting the heat press cycle.** Press the start button to begin the heat press cycle.



**8. Removing the transfer tape.** Once the cycle is complete, remove material from tray and after 30 seconds, remove the transfer tape



## Get Started with the Fast Ironing

The auto heat press has 4 fast modes, each for different products.

### **Mode 1:** Heat Transfer Vinyl

The heating temperature is **300°F**, and it will take **15s**.

Press "**start**" to begin heat pressing.





### **Mode 2:** Glitter HTV

The heating temperature is **320°F**, and it will take **15s**.

It's suitable for various materials, such as textiles, wood, and ceramic.

### **Mode 3:** Transfer Paper

The heating temperature is **330°F**, and it will take **20s**.

To improve operational safety, the placement area is separated from the heating area.



### **Mode 4:** Sublimation Paper

The heating temperature is **390°F**, and it will take **40s**.

Fast heating time makes the products stand out in the market.

Need more details on temperature and time settings for other materials? Check out our [HTVRONT Auto Press temperature and time chart](#) for further reading.



## Memory Modes in Everyday Task

This auto heat press has **two user-defined memory modes**, which can set temp and time as needed and memorize the usage habit.



### One-click operation with the Auto Mode

Last, the auto mode is quite convenient and intelligent.

It combines the features of fasting ironing and user-defined models, which makes it easy to create a batch of similar products.

